

2014
WHOLESALE

patterned by **zebra** CATALOG

INTRODUCING...
**Scrapbooking
for Quilters!**

Page 3

**Over 130
Stamp
Panels!**

Page 3-7

NEW BOOKS!

Back Cover

Lighthouses
Page 14



Wholesale Pricing

Individual Patterns	Wholesale	Suggested Retail
Batter Up!, Holiday Houses and Where ya' Been?	\$6.00	\$12.00
All other individual patterns and Quilt Police Doll	\$4.50	\$9.00

Pattern Collections		
Holiday Houses (Includes printed fabric detail panels)	\$59.50	\$119.00
All other pattern Collections	\$44.50	\$89.00

BEST VALUE!	Block of the Month Starter Package 1 Collection, 1 twelve pack of Blocks 1,2, & 3, plus the Admin CD		
	Holiday Houses (Includes printed fabric detail panels)	\$241.50	N/A
	All other BOM themes	\$172.50	N/A
	Block of the Month 12 common patterns per package - 25%-33% Savings!		
	Monthly Pack of 12 common patterns	\$36.00	\$12.99-\$16.99
	Holiday House Monthly Pack (Includes a printed fabric detail panels)	\$54.00	\$12.99-\$19.99
	BOM Admin CD with Branded Quilt Shop Pattern Covers	\$20.00	

Printed 18" x 21" Panels 100% Cotton		
CityStamp™, StateStamp™, NationStamp™ and GetAwayStamp™	\$10.00	\$20.00

Printed 6" x 7" Mini Panels		
CityStamp™, StateStamp™, NationStamp™ and GetAwayStamp™	\$3.00	\$6.00

BEST VALUE!	Printed Mini Panel Collections & Spinner Sets		
	StateStamp™ Mini Panel 50 State Collection	\$299.00	\$6.00
	StateStamp™ Mini Panel Spinner Set: 3 ea. of 50/total 150 @ \$1.99 ea.		
	U.S. CityStamp™ Mini Panel 36 City Collection	\$219.00	\$6.00
	CityStamp™ Spinner Set: 3 ea. of 36/total:108 @ \$2.03 ea.		
	International CityStamp™ Mini Panel 45 City Collection	\$269.00	\$6.00
	CityStamp™ Spinner Set: 3 ea. of 45/total 135 @ \$1.99 ea.		
	Complete Mini Stamp Spinner Set 3 ea. of all 131/393 total @ \$1.67 ea.	\$659.00	\$6.00

Printed Cotton Accessories		
Holiday Houses Panel Sets 1 ea. of 12 or 12 ea. of 1 @ \$1.25 ea.	\$15.00	\$36.00
Where ya' Been? Printed Panel Stickers	\$6.00	\$12.00

Custom Design Service Minimum Charge		
Minimum Paper Pattern Order – 36 pieces	\$4.50	\$9.00-\$12.00
Minimum Mini Panel Order – 36 pieces	\$3.00	\$6.00-\$8.00
Minimum Printed Panel Order – 12 pieces	\$10.00	\$20.00
Minimum FabricPlate™ Order - 40 pieces	\$2.00	\$4.00-\$6.00

Books		
Appliqué A-Z Baby Animals	\$9.00	\$18.00
Appliqué Farm Animal	\$9.00	\$18.00

ZEBRA PATTERNS GENERAL WHOLESALE BUSINESS TERMS

Zebra Patterns offers wholesale pricing to businesses with valid wholesale/comparable state tax id number. Credit card payment terms only. Pattern orders are shipped within 1-3 business days. Printed panels/mini panels subject to up to a 2 week lead time.

Printed Items Include: Holiday Houses, Quilt Police Doll, Custom Panels, FabricPlates™ and Where ya Been? fabric stickers.

Minimum Opening Order: \$125.00 (Pulls of 3 patterns, Flat rate \$12.35 shipping in USA for Market)

Subsequent Order Minimums: 12 pieces (Pulls of three. BOM count as 12 pieces each. Shipping charged at cost.)

Scrapbooking for Quilters!

☎ 410.370.3798 or 410.531.9047

Where ya' Been?

FUN QUICK EASY CUSTOM!

Scrapbooking Pattern for Quilters!

Approx Size 54" x 64" Finished

CD INCLUDES:

- 30+ Custom Travel Memory Images (PDF and jpeg formats)
- A full "Where ya Been?" upper & lower alphabet
- "Where ya' Been?" Quilt Label

Alphabets

Postcard Art

Quilt Label

Scrapbooking for Quilters!

This is a fast and easy way for any level quilter to make a custom quilt to tell friends and family:

"Where ya' Been?"

Start by choosing a background fabric. Next, choose several of Zebra Patterns pre-printed mini stamps (sold separately) and head on down the road! Use the Travel Memories imagery CD (like fabric stickers for your scrapbook quilt) to print on your own fabric as many times and in any size you wish! Once you have all your mini stamps, roads, and "fabric stickers" chosen, fuse in place and quickly sew down edges, add borders, quilt, and **Enjoy!**



CD INCLUDED!



Printable Travel "Fabric Stickers" on CD



NOTE: Also available as a printed panel (sold separately.)

Tell Your Story in a Memory Quilt!

This simple triptych mini-stamp wall hanging can be assembled and completely sewn in less than 2 hours! Pattern Included! Other ideas included! Great for classes!

SUPER EASY-TO-DO!

Quick Memory Gift!

Approx Size 8" x 32" Finished

Debra Gabel's Signature Stamp Series

Order online: www.zebrapatterns.com



At the Beach GetAwayStamp™ Pattern 40018

FREE
PERSONALIZED
NAME PATTERN

Zebra Patterns' Stamp Series Defined

The Zebra Patterns Stamp Series has become Zebra Patterns' signature product line. There are several collections of stamps. Enjoy making quilts with unique StateStamp™, CityStamp™, GetAwayStamp™, or NationStamp™, and now CustomStamp™ products. The Stamp Series designs often include notable images and sites, such as capital buildings, state flowers, birds and other distinguishing features of that city, state or nation. Follow Debra's **Blog** and **"LIKE" us on facebook "Zebra Patterns"** page to see sneak peeks of upcoming releases.



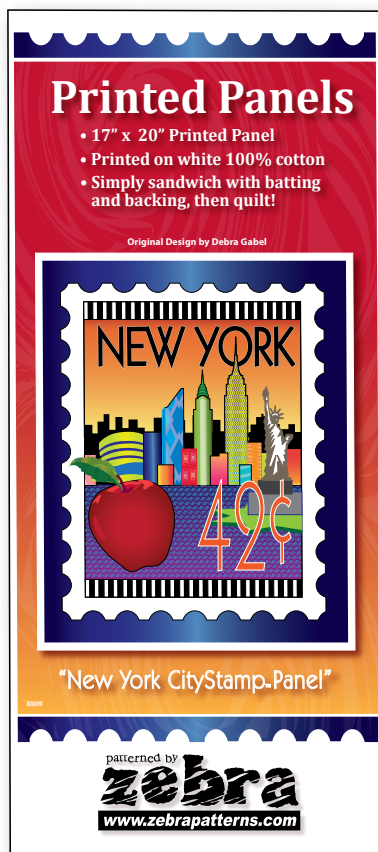
Stamps: 3 Forms

Appliqué Pattern: This is a standard paper pattern finishing at approximately 24" x 30". The pattern includes; pattern pieces for quilters to create their own stamp, positioning reference sheet, color photo and full directions. You make it! **40000 Series.**

Full Size Printed Panel: This is a fat quarter size full color printed stamp panel all ready to be sandwiched with your choice of backing and batting. Panels finish approximately 18" x 21". This is a quick project that makes a great gift. All 50 states, many cities and nations and destinations are available. **80000 Series.**

Mini Size Printed Panel: This is a mini panel that finishes approximately 6" x 7". These fun panels are great for tote pockets, back labels, mini quilts, focus blocks, and quilted postcards. All 50 states, many cities and nations and destinations are available. **81000 Series**

General Notes: Stamp Panel releases first, followed by paper appliqué patterns. We are releasing more paper patterns determined by demand. Visit www.zebrapatterns.com for most current releases of panellpattern.



Large Panel 18" x 21"



Mini Panel 6" x 7"

Easy
Projects!
with
Printed
Panels

Stamp Patterns



California 40033



Florida 40035

Standard Paper
**Appliqué
Patterns**



America NationStamp™ 80050



Maryland 40032



Ohio 40030



Texas 40031



Baltimore 40007



Chicago 40011



New York 40009



Philadelphia 40010



Washington D.C. 40008

PANELS:

INTERNATIONAL
CityStamp™ & Destinations
Printed Panels *(Continued on next pages)*



Agra, India



Amsterdam, Netherlands



Athens, Greece



Auckland, New Zealand



Bangkok, Thailand



Barcelona, Spain



Beijing, China



Brussels, Belgium



Budapest, Hungary

INTERNATIONAL CityStamp™ & Destinations Printed Panels



Buenos Aires, Argentina



Cairo, Egypt



Capetown, South Africa



Caribbean



Dubai, United Arab Emirates



Dublin, Ireland



Edinburgh, Scotland



Florence, Italy



Galapagos Islands, Ecuador



Geneva, Switzerland



Hong Kong



Istanbul, Turkey



Jerusalem, Israel



Lima, Peru



London, England



Madrid, Spain



Manila, Philippines



Moscow, Russia



Munich, Germany



Nairobi, Kenya



Oslo, Norway



Paris, France



Prague, Czech Republic



Puerto Vallarta, Mexico



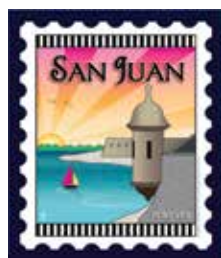
Reykjavik, Iceland



Rio de Janeiro, Brazil



Rome, Italy



San Juan, Puerto Rico



Seoul, South Korea



Singapore



Sydney, Australia



Tokyo, Japan



Toronto, Canada



Vancouver, Canada



Vatican City



Venice, Italy

UNITED STATES

CityStamp™ & Destinations Printed Panels



Arlington, TX



★ America



★ At the Beach



At the Lake



Austin, TX



★ Baltimore, MD



Boston, MA



★ Chicago, IL



Corpus Christi, TX



Cruisin'



Dallas, TX



Denver, CO



El Paso, TX



Ft Worth, TX



Hilo, HI



Hilton Head, SC



Honolulu, HI



Houston, TX



Kauai, HI



Lahaina, HI



Las Vegas, NV



Los Angeles, CA



Maui, HI



Memphis, TN



Myrtle Beach, SC



★ New York City, NY



One World Trade, NYC



Paducah, KY



★ Philadelphia, PA



Pittsburgh, PA



Salt Lake City, UT



San Antonio, TX



San Diego, CA



San Francisco, CA



Seattle, OR



★ Washington DC

50 StateStamp™ Panels and Mini Panels



Alabama - 8x040



Alaska - 8x046



Arizona - 8x052



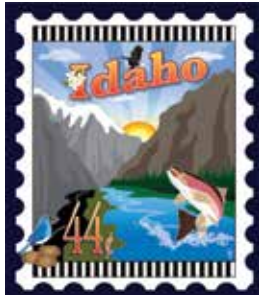
Arkansas - 8x047



★ California - xx033



Hawaii - 8x044



Idaho - 8x045



Illinois - 8x081



Indiana - 8x053



Iowa - 8x054



Massachusetts - 8x059



Michigan - 8x039



Minnesota - 8x082



Mississippi - 8x060



Missouri - 8x061



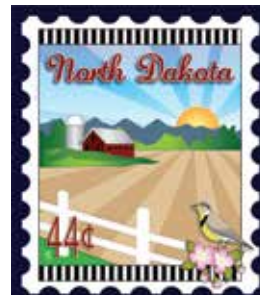
New Mexico - 8x042



New York - 8x034



North Carolina - 8x067



North Dakota - 8x068



★ Ohio - xx030



South Dakota - 8x073



Tennessee - 8x074




★ Texas - xx031



Utah - 8x075



Vermont - 8x076

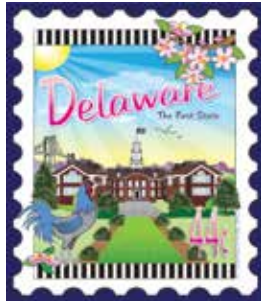
All StatesStamp™ products with  green stars are available as Paper Patterns, 6" x 7" Mini Panels and 18" x 21" Panels. States without green stars are available as 6" x 7" Mini panels and 17" x 20" Panels ONLY.



Colorado - 8x036



Connecticut - 8x048



Delaware - 8x037



★ Florida - XX035



Georgia - 8x049



Kansas - 8x055



Kentucky - 8x056



Louisiana - 8x057



Maine - 8x058



★ Maryland xx032



Montana - 8x062



Nebraska - 8x063



Nevada - 8x064



New Hampshire - 8x065



New Jersey - 8x066



Oklahoma - 8x069



Oregon - 8x070



Pennsylvania - 8x038



Rhode Island - 8x071



South Carolina - 8x072



Virginia - 8x041



Washington - 8x077



West Virginia - 8x078



Wisconsin - 8x079



Wyoming - 8x08x

TIMELESS

Florals

Order online: www.zebrapatterns.com

39 Choices!

Available individually or Collections of twelve. Finished Size: 12" x 20"

Floral Collection 1: Coreopsis, Sweetpea, Dogrose, Cornflower, Callily, Speckled Lily, Columbine, Poppy, Hollyhocks, Gladiola, Iris, Morning Glory

Floral Collection 2: Pansy, Daffodil, Tulip, Lily of the Valley, Black Eyed Susan, Forget-Me-Not, Bleeding Heart, Bluebonnet, Cyclamen, Sunflower, Anemone, Hibiscus

Floral Collection 3: Violets, Bird of Paradise, Poinsettia, Amaryllis, Orchid, Lilac, Lady Slipper, Waterlily, Clematis, Petunia, Azalea, Plumeria

Floral Collection 4: American Rose, Mistletoe, Carnation. & more coming!

Floral Collection 1



Coreopsis - 10001



Sweetpea - 10002



Dogrose - 10003



Pansy - 10013



American Rose - 10037



Cornflower - 10004



Callily - 10005



Speckled Lily - 10006



Lily of the Valley - 10016



Mistletoe - 10038



Columbine - 10007



Poppy - 10008



Hollyhocks - 10009



Bleeding Heart - 10019



Carnation - 10039



Gladiola - 10010



Iris - 10011



Morning Glory - 10012



Sunflower - 10022

Floral Collection 2



Daffodil - 10014



Tulip - 10015



Black Eyed Susan - 10017



Forget-me-not - 10018



Bluebonnet - 10020



Cyclamen - 10021



Anemone - 10023



Hibiscus - 10024

Floral Collection 3



Violets - 10025



Bird of Paradise - 10026



Poinsettia - 10027



Amaryllis - 10028



Orchid - 10029



Lilac - 10030



Lady Slipper - 10031



Waterlily - 10032



Clematis - 10033



Petunia - 10034



Azalea - 10035



Plumeria - 10036

Block of the Month Partnering Program

Zebra Patterns has an exceptional record of partnering with quilt shops all over the world to bring affordable, unique applique Block of the Month Programs to their stores. Special Partnering pricing makes the BOM attractive in more than just appearance! Your shop gets to promote your store BRAND on every BOM Pattern.

FULL SERVICE WEBSITE
www.zebrapatterns.com
Visit us!

Patterns, Collections and Block of the Month in Detail

Lighthouses, Butterflies, Birds 1, Birds 2, Sealife, Basket Blooms, Bible 1, and Holiday Houses are each available to Quilt Shops in three distinct packages to maximize the value of the quilting Customers' experience and the Shop's profitability.

INDIVIDUAL PATTERNS contain one positioning sheet, separate sheet(s) for the pattern pieces and full color photo. Comprehensive instructions are included with diagrams and tips. Patterns can be used for raw edge or hand turned appliqué. Retail-ready package with professional printing in a high clarity zip-loc 6"x 9" poly bag.

COLLECTIONS include all 12 patterns for the theme plus a bonus 13th finishing pattern/instructions for the quilter whose goal is the full quilt from the start. This package offers 24% savings over individual patterns. Retail-ready package with professional quality printing in a high clarity zip-loc 9"x 12" poly bag. Individual patterns appear in one 8 1/2 x 11 color photo.

BLOCK OF THE MONTH (B.O.M.) offers the Quilt Shop a package including 12 common patterns, each in its own zip-loc poly bag into which fabric cut by the shop for each month's kit is inserted. Excellent Zebra designs, patterns discounted by 25%-33% for BOM program, and the value contributed by each Quilt Shop's unique selection of fabrics and staff involvement are the building blocks of a solid program that brings Customers back to your shop throughout the year. In addition to the 12 common patterns, each package contains one 8 1/2" x 11" full color photo of the completed 60" x 70" quilt, and one set each of clear, cutting instructions for your shop with brief instructions on positioning sheet.

B.O.M. Admin CD - Nominally priced and packed with tools and features to promote your own Quilt Shop brand and help run a successful program.

- Individual PDF cover art for all 12 patterns, with full color photo and customized with Shop logo. Printed locally by Quilt Shop which saves 25%- 33% per pattern!
- Tracking sheet to record Customer pick ups and payments.
- Jpeg Image of every pattern for promotion.



Zebra Patterns: The Company

Founded by Debra Gabel in 2000, Zebra now has over 350 items in its product line. Zebra strives to make patterns in a realistic graphic style, patterns that Quilters want to complete with quality fabrics and supplies from full service Quilt Shops. **Custom work available! See page 23.**

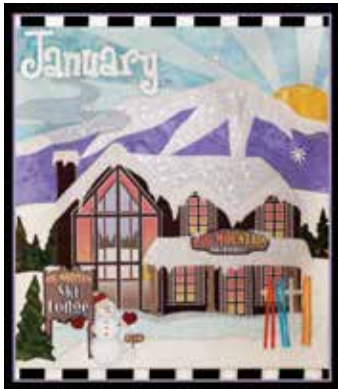
Follow Debra's blog at www.zebrapatterns.com for sneak peeks of new products, and to see for yourself how the Zebra community of Quilters are evolving throughout the U.S. and Internationally. Debra's "Call for Entries" is a rapidly growing platform through which Quilters volunteer to make samples for new patterns and books, organically building the Zebra brand and insuring that new products are on target.

It has been Debra's goal to travel the world through quilting, lecturing, teaching and designing. Quilt Shop appearances and workshops are excellent opportunities to learn about Owners' goals, to share and even reshape Zebra ideas to help meet them, and to build long lasting mutually beneficial relationships.

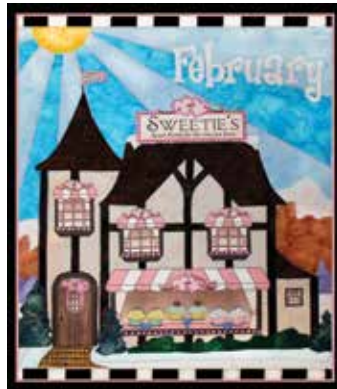
Find us on
facebook
facebook.com/ZebraPatterns



Holiday Houses



January-90001



February-90002



March-90003



April-90004



May-90005



June-90006



July-90007



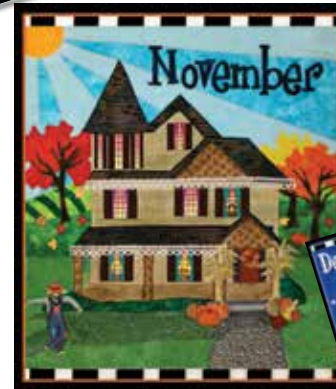
August-90008



September-90009



October-90010



November-90011



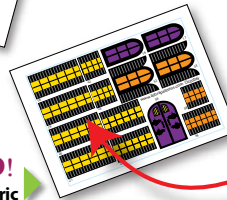
December-90012

Holiday Houses

A fabulous collection of monthly Victorian influenced homes and town buildings that make unique 12" x 14" display quilts. **INCLUDED!** in every *Holiday House* pattern there is a pre-printed cotton fabric panel with windows and details to make your project look intricate. This is a perfect project on which to use all those cute decorative buttons and trims offered on the market today. These are available as individual patterns, a complete Collection as well as in a Quilt Shop BOM program. **FREE** alternate type Downloads! *BOM Program features and benefits on page 12.*

FREE PDF!

PATTERN DOWNLOAD! of Alternate Holiday Greetings at website!



INCLUDED!

Pre-printed fabric of windows/doors and tiny details

Extra panels available

Available as BOM, Individual, and Collection!

Lighthouses

Order online: www.zebrapatterns.com

Finished 64" x 84"



Lighthouse Collection 44015
BOM Finishing Kit 44013

Lighthouses Finished 64" x 84"

Twelve majestic Lighthouses from all around the USA. Available as a **full Collection, Individual Patterns or as Quilt Shop Block of the Month**. Collections and B.O.M. include finishing instructions to complete the quilt as pictured. The individual Lighthouse blocks finish at 14" x 14" or 20" x 20" with 3" borders.

The unique beach scene on the bottom border could be used on a traditional pieced quilt to spice it up! Inquire about creating a **custom lighthouse** for your local area! *Quilt Shops Only. See page 23 for custom design.*

BOM Program features and benefits on page 12.



Assateague Light, VA - 44001



Big Sable, MI - 44002



Boston Light, MA - 44003



Cape Hatteras, NC - 44004



Heceta Head, OR - 44005



New Canal, LA - 44006



Oswego Light, NY - 44007



Pigeon Point, CA - 44008



Point Vicente, CA - 44009



Portland Head, ME - 44010



Split Rock, MN - 44011



St. Augustine, FL - 44012

Sealife

Let's go under the Sea and enjoy twelve colorful appliqué quilt patterns! Sealife is available as individuals, Collections, and Quilt Shop Block of the Month patterns. Collections and B.O.M. include finishing instructions for complete quilt as pictured. The full quilt finishes at approximately 64" x 70". The individual patterns finish at 12" x 12" with scallop borders. The image within stripe border is 8"x 8". **BOM Program features and benefits on page 12.**



Complete Sealife Collection - 55015
BOM Finishing Kit 55013



Angelfish - 55001



Clownfish- 55002



Crab - 55003



Dolphin - 55004



Jellyfish - 55005



Lobster - 55006



Manatee - 55007



Orca - 55008



Seahorse - 55009



Sea Turtle- 55010



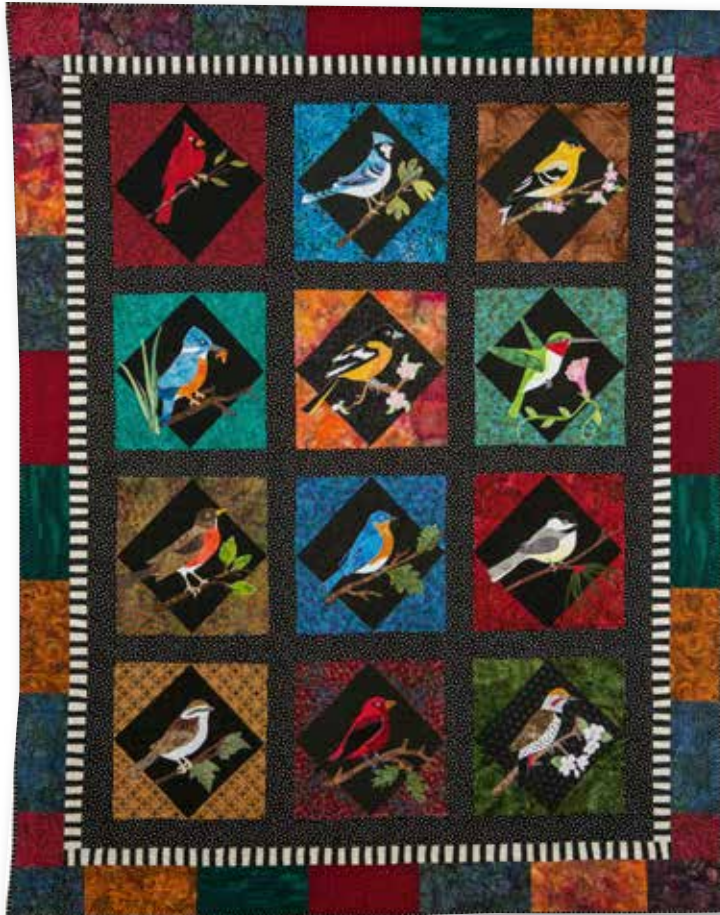
Shark - 55011



Stingray - 55012

Birds 1

Order online: www.zebrapatterns.com



Complete Bird 1 Collection - 50015
BOM Finishing Kit - 50013

Birds 1 and 2

Twenty-four beautiful bird patterns are available as individual patterns, Collection, and Quilt Shop Block of the Month Programs. Collections and B.O.M. include finishing instructions for complete quilts as pictured. The individuals can be used as wall hangings, pillow covers, tote covers. With widened 6" side borders and no top/bottom borders, patterns can easily be made into placemats. The full quilt for either theme finishes at approximately 64" x 70". The individual wallhanging patterns finish at 14" x 14" without borders and 20" x 20" with borders.

BOM Program features and benefits on page 12.



Cardinal - 50001



Bluejay - 50002



Goldfinch - 50003



Oriole - 50004



Bluebird - 50005



Robin - 50006



Hummingbird - 50007



Chickadee - 50008



Scarlet Tanager - 50009



Kingfisher - 50010



Sparrow - 50011



Northern Flicker - 50012



Mockingbird - 51001



Western Meadowlark - 51002



Blue Stellar Jay - 51003



Violet Green Swallow - 51004



Western Tanager - 51005



Mountain Bluebird - 51006



Redbreast Nuthatch - 51007



Vermillion Flycatcher - 51008



Acorn Woodpecker - 51011



Quail - 51012



Complete Bird 2 Collection - 50015
BOM Finishing Kit - 50013



Yellow Warbler - 51009



Spotted Towhee - 51010

Twenty Four Birds!

"Birds 1" is a collection of birds that are primarily found on the Eastern half of the United States. "Birds 2" focuses more on the western half of the country. There are 24 birds in the full "Birds" series. You could mix the individual bird patterns from either collection to make your own unique quilt. Each bird pattern includes full instructions, a full sized positioning sheet and sequentially numbered pattern pieces for ease of use. **BOM Program features and benefits on page 12.**

Basket Blooms

☎ 410.370.3798 or 410.531.9047

Basket Blooms

Basket Blooms is available as a **full Collection** or as **Quilt Shop Block of the Month**. Collections and B.O.M. include finishing instructions to complete the quilt as pictured. To purchase these **flowers** individually, see the individual Florals for 12" x 20" patterns. **BOM Program features and benefits on page 12.** (*Note: individual flowers on floral page are **without** baskets*) The individual Basket Blooms blocks finish at 14" x 14".

ONLY available as BOM or complete collection. Individual flowers are on the next page.



Sunflower - 11001



Hibiscus - 11002



Anemone - 11003



Tulip - 11004



Poppy - 11005



Daffodil - 11006



Speckled Lilies - 11007



Iris - 11008



Pansy - 11009



Columbine - 11010



Hollyhocks - 11011



Black Eyed Susan - 110012



Complete Basket Blooms Collection 11015
BOM Finishing Kit 11013



Monarch - 60001



Scarlet Mormon - 60002



Midnight Blue - 60003



Green Congo - 60004



Yellow Swallowtail - 60005



Flying Handkerchief - 60006



Purple Spotted - 60007



Blue Mt. Swallowtail - 60008



Luna Moth - 60009



White Angel - 60010



Vibrant Sulphur - 60011



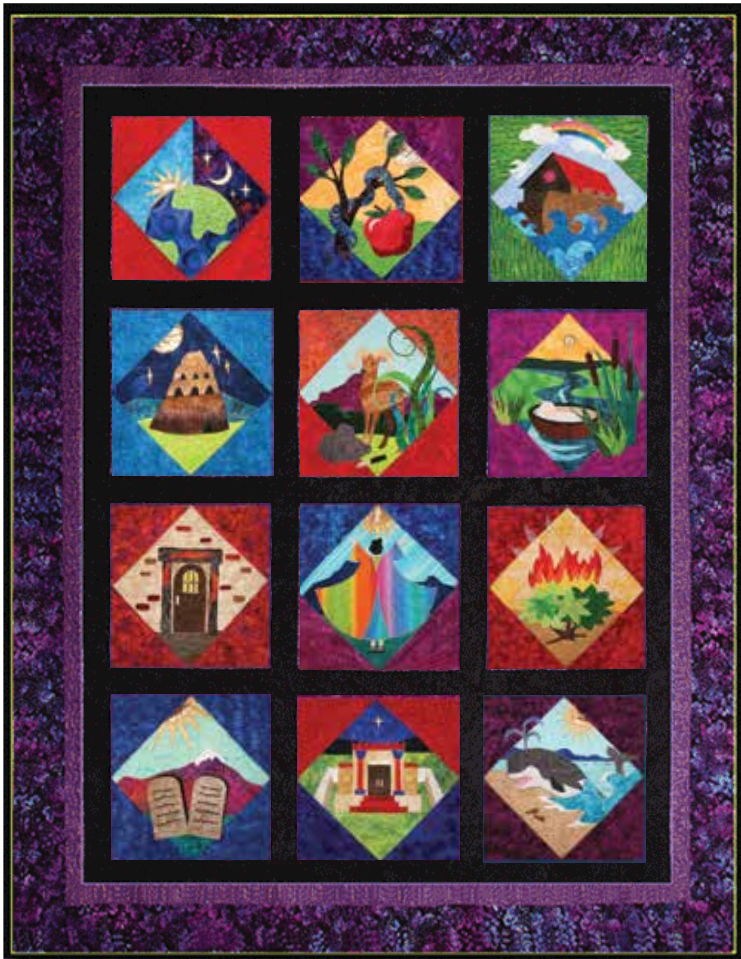
Rajah Brookes Birdwing - 60012



Complete Butterfly Collection - 60015
BOM Finishing Kit - 60013

Butterflies

Butterflies are available as 12 individual patterns, a full Collection, or as a Quilt Shop Block of the Month Program. Collections and B.O.M. include finishing instructions for complete quilts as pictured. The individuals can be used as wall hangings, pillow covers, tote covers. With widened 6" side borders and no top/bottom borders, patterns can easily be made into placemats. The full quilt finishes at approximately 64" x 70". The individual patterns finish at 14" x 14" without borders and 20" x 20" with borders.
BOM Program features and benefits on page 12.



Complete Bible Collection - 70015
BOM Finishing Kit 70013

Bible I: In the Beginning

Twelve Old Testament Bible scenes make up this unique Judeo/Christian themed quilt. Bible I is available as individual patterns, Collection, and Quilt Shop Block of the Month. Collections and B.O.M. include finishing instructions for complete quilt as pictured. The full quilt finishes at approximately 64" x 70". The individual patterns finish at 14" x 14" without borders and 20" x 20" with borders. **BOM Program features and benefits on page 12.**



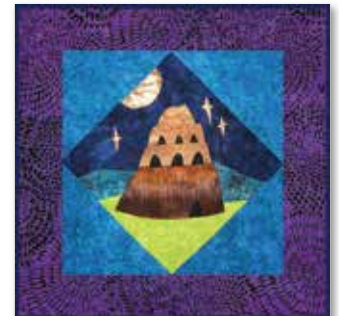
Creation - 70001



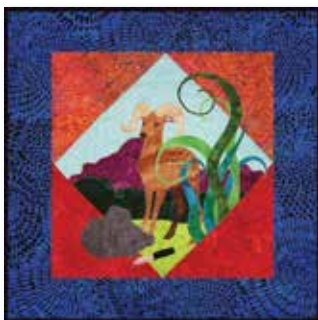
Temptation - 70002



Noah's Ark - 70003



Tower of Babel - 70004



Abrahams Sacrifice - 70005



Moses in the Nile - 70006



Passover - 70007



Joseph's Coat - 70008



Burning Bush - 70009



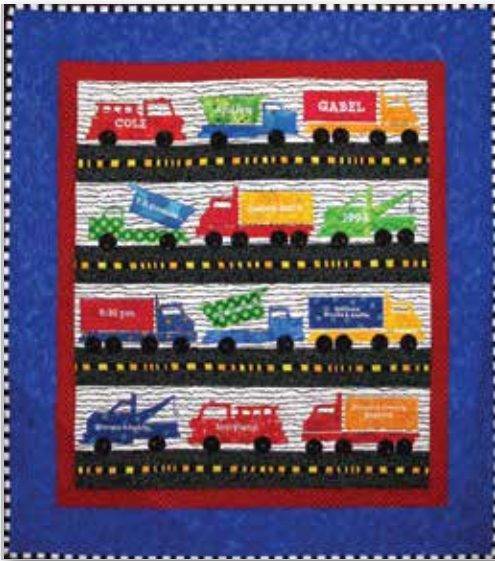
Ten Commandments - 70010



Solomon's Temple - 70011



Jonah and the Whale - 70012



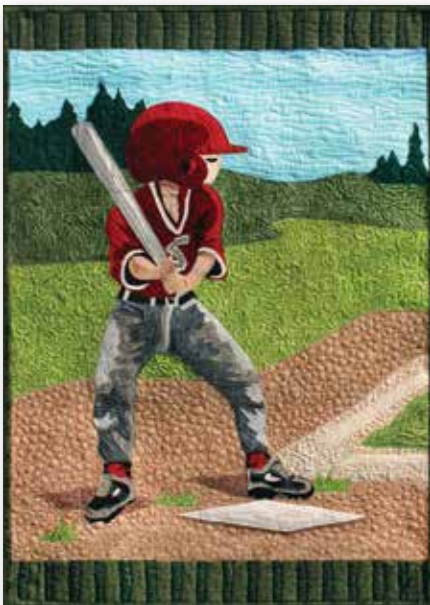
Trucks 20002
39" x 43"



Sweets 20001
38" x 44"



Airlanes 20003
36" x 50"



Batter Up! 20007
20" x 30"



Scotties 20005
48" x 48" paper piecing



Celebrate
Chair Back Cover
20006

Stocking
Prairie Point
30001



Trucks: Sewing several rows of roads and sashing make the background. Positioning simple truck shapes completes the fun roads of trucks. Can be personalized with names, special events and dates on trucks with embroidery or fabric markers/paints. **Easy to do.**

Sweets: Simple four patches and nine patches set off the yummy sweet treats that are appliquéd in position. **Easy to do.**

Airlanes: Nine patches alternated with a simple appliquéd airplane make this pattern quick to assemble. One of the planes soars off into the border pulling behind a sign which can be personalized with embroidery or fabric marker/paint. **Easy to do.**

Scotties: This is a paper pieced children's quilt. Nine patches and paper pieced dogs are embellished with a three dimensional fabric bow. **Easy to do.**

Batter Up!: Based on Debra Gabel's award winning quilt, this wall quilt can be customized with your batter's home team colors and uniform number with the included patterns. Add a pony or pig tail to convert this to a girl batter.

Celebrate Chaircover: This lined chair cover slips over most chair backs and has a FREE downloadable matching placemat. This is a great baby shower or birthday gift. This cover can be used every year and for every birthday guest. **Easy to do.**

Prairie Point Stocking: This lined Christmas stocking is nicely embellished with four prairie points and jingle bells on each side. It has ample room for all the holiday goodies that Santa may bring. **Easy to do.**

Doorhangers & More

☎ 410.370.3798 or 410.531.9047



Jackie's Clothesline 40001
22" x 36"

The trip to any laundry room is perked up by this doorhanger. This quilt is another unique Zebra Patterns design great for the Quilter's home or a fun gift for a friend. Named after Jackie, the owner of Patches Quilting and Sewing in Mt. Airy, MD. Wooden Clothespins included with pattern!



Wonky Schoolhouse 40002
15.5" x 24"

Teachers have too many candles and mugs! Why not make this quick and easy to do pattern for your favorite teacher to show your appreciation! She will proudly display this quilt on their door or classroom wall personalized with their name and school. 15.5" x 24".

Also Available as full sized 18" x 21" Printed Panel too - even quicker!



PIP Pouch 30002
Approx 5" x 7" finished pouch
One Hour Project!

The perfect solution to keep **guild name tag, phone and collectible pins** all in one *easy to make pouch!* Take exactly what you need to meetings and shows. Display your pins on the wide strap. Keep your phone inside or in the back open pocket. The clear pocket on front is perfect for your i.d. or business card. The **PIP POUCH** is also great for airport travel.



Quilt Police Doll 30003
Approx 3" x 8" finished
One Hour Project!

Did you ever want to just stick a pin in some of those quilt police women? lol... This is a fabric printed panel that makes up into a **QUILT POLICE DOLL!** Now you can make this super easy project into a pin cushion, or an eye glass holder or even an ornament.
Super Easy!



REDWORK STAMPS! MORE STAMPS COMING!!!

Zebra Patterns has translated the popular Stamp Patterns, that the company has become known for, into beautiful modern Redwork Patterns.

If you are interested in a particular state or city not yet patterned in redwork, call and make a request! Currently Beach, New York City, Ohio, Texas and America are available for shipment.



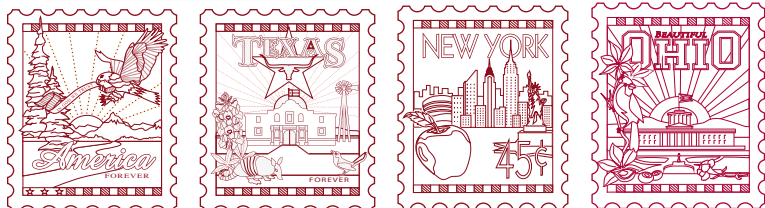
U.S.A. FabricPlates™



Several **STOCK** Vanity Sayings Available:

This is a fun novelty gift for any quilter to add to a tee shirt, tote, "Where ya Been Quilt", a T-shirt Quilt and so much more!

Custom FabricPlate™ Vanity Sayings and State Plate Available too!



Custom Patterning

Designs by Debra Gabel for your Shop!



Work with Debra...

Create Custom Patterns & Panels!



Custom Location Stamp Panels

Dear Shop Owner,

I have designed hundreds of successful Appliqué Quilt Patterns and Books over the past 10 years. I have learned that every shop wants to have their own flavor or style. As quilters we seek out uniqueness in every shop we go to all over the country. Customers want "a taste" of the area they are visiting. I know you shop for patterns that will sell in your particular area.

Wouldn't it be great if you had a "CUSTOM" designs for your geographic area? Maybe a mini stamp of your shop, or a local landmark? How about a great professional design for the next shop hop project?

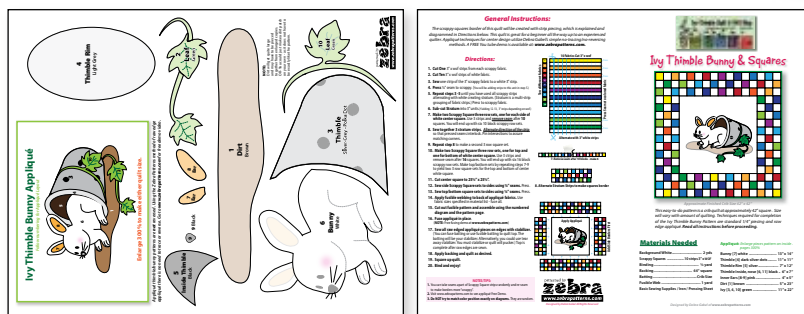
I am now offering custom patterning to Quilt Shops! You can contact me at market, by phone or email to discuss the possibilities. I love to design and I can make that custom pattern or panel for you and your shop! It can be exclusive or it can be an addition to the Zebra line.

Start building your own Branded line of Appliqué Patterns and make your shop that MUST STOP destination in your area!

Sincerely,
Debra Gabel



Your Shop in a Panel

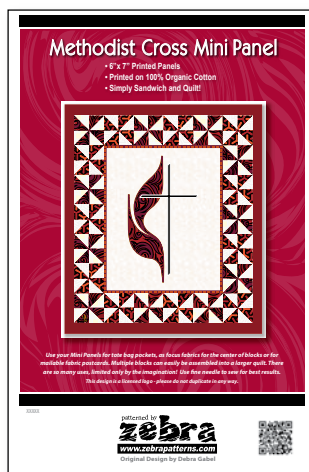


Custom Location Shop Hop Patterns

Custom Patterns and/or panels will make your shop or event stand out! You know your business and what your customers want. Now you have your own experienced professional designer to make your ideas a reality! Contact Debra to discuss details.

A design fee and a minimum order of your design, will get you a custom pattern!

Quantities vary depending on product. Allow 2 weeks turn around time from approval of artwork.



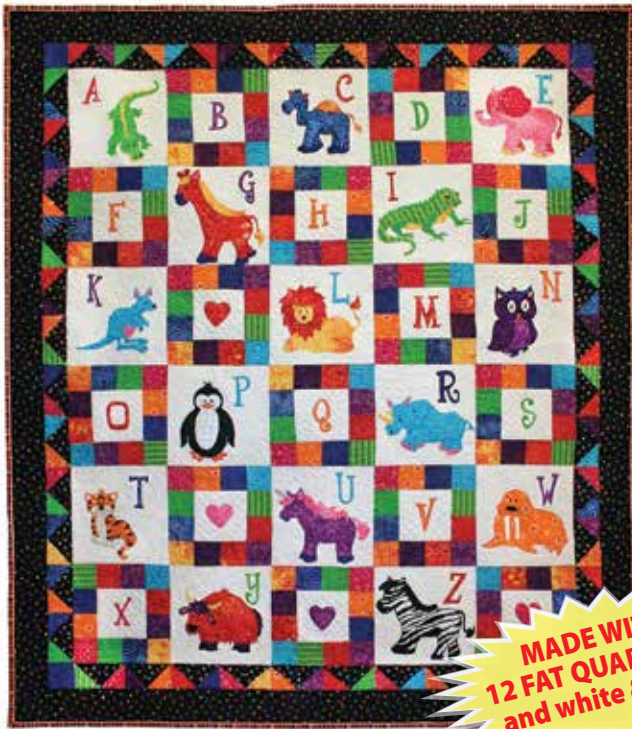
Custom Licensed Patterns



Quilt Show Fund Raisers



Event Project Kits



**MADE WITH
12 FAT QUARTERS!
and white & black**



Applique Animals A-Z

- 26 easy to applique stylized animals
- Each letter is represented by a unique animal
- Raw-edge fusible patterns are quick and easy
- Add animals to your favorite pieced quilt
- Published and sold by Zebra Patterns

Some of the great animals included are; buffalo, duck, fox, hippo, jaguar, ostrich, squirrel, walrus and many others! The designs are perfect for any kind of appliqué from fusible to needle-turned.

presented by
zebra
www.zebrapatterns.com

Applique Farm Animals

- 30+ stylized farm animals and farm elements
- Fun "old McDonald" playmat
- Raw-edge fusible patterns are quick and easy
- Add animals to your favorite pieced quilt pattern
- Published and sold by Zebra Patterns

Some of the great animals included are; cow, sheep, horse, donkey, chicken and many others! The designs are perfect for any kind of appliqué from fusible to needle-turned.



BOOK Coming Soon! Bible: "In the Beginning"

Our popular series of Old Testament Quilt blocks have been put into a book! No competition of large resellers and internet discounting! Judea/Christian appeal! Also available as BOM.

- Twelve 14" x 14" blocks from the Old Testament
- Raw-edge fusible appliqué makes the layered patterns quick and easy to complete
- Make a full quilt, a pillow, or place mats.



BOOK Coming Soon! Basket Blooms Book

Our popular series of Floral Basket Quilt blocks have been put into a book! No competition of internet discounting! Also available as BOM.

- Twelve 14" x 14" blocks from woven bias baskets
- Raw-edge fusible appliqué makes the layered patterns quick and easy to complete
- **Included:** Anemone, Black Eyed Susan, Columbine, Daffodil, Hibiscus, Hollyhocks, Iris, Lily, Pansy, Poppy, Sunflower and Tulip.

patterned by
zebra
www.zebrapatterns.com

